



AGRICULTURAL VALVES

ALLIGATOR's product range includes air/water valves specially designed for the agricultural sector. They are used to fill tractor tires with water and air, safely and reliably.

CONTENT

Air/water valves	76
Accessories for agricultural valves	78
Water filling and emptying devices	79

AIR/WATER VALVES

For filling tires with water to increase traction

- **Application:** Tractor
- **Properties:** Wide valve passage allowing large tires to be filled quickly
- **Valve hole:** 15.7 + 0.4 mm
- **Installation torque:** 5–8 Nm



Tube base valve

Art. no.	Length (mm)	Vehicle type	Material	Surface	Valve caps
9-542503	54		CuZn	-	

Tube valve

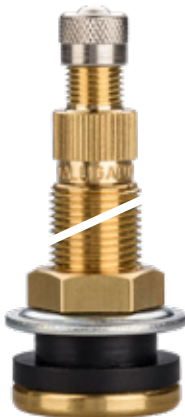
Art. no.	TR no.	ETRTO no.	Length (mm)	Vehicle type	Material	Surface	Valve caps
9-534043	218A	V4.01.1	47		CuZn	-	

Snap-in agricultural valve

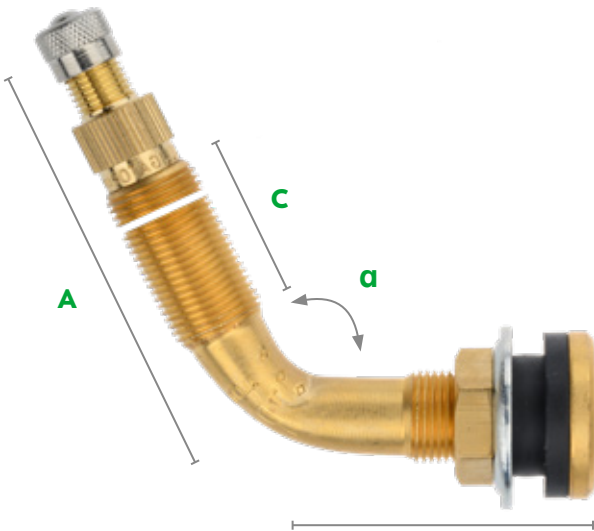
Art. no.	Length (mm)	Vehicle type	Material	Valve caps
9-594012	55		CuZn	



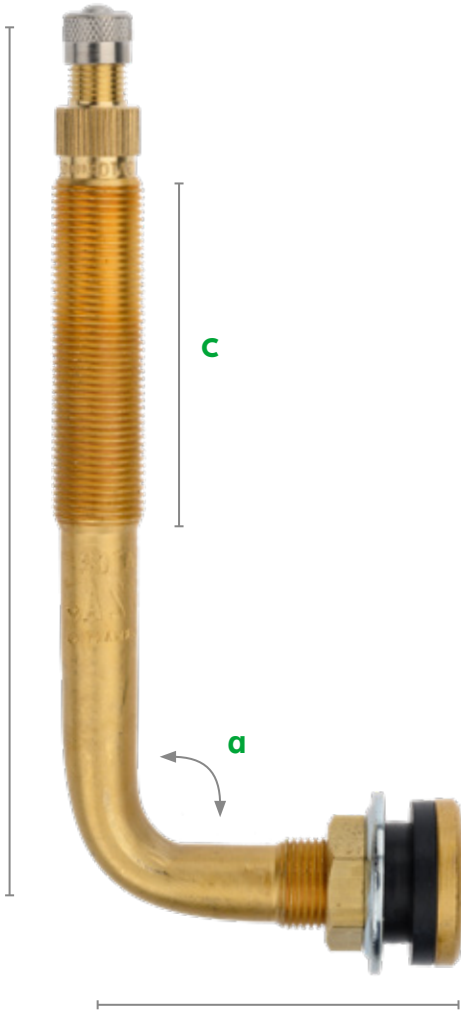
9-544501



9-544503
9-544543



9-545503
9-547503



9-546503

Tubeless valves

Art. no.	TR no.	ETRTO no.	A (mm)	B (mm)	Bending angle a (°)	C (mm)	Vehicle type	Material	Valve caps
9-544543	618Aeq		40					CuZn	
9-544503	618A	V5.01.1	51					CuZn	
9-544501	618A	V5.01.1	51					CuZn	
9-547503	623A	V5.02.3	57	42.5	65	36.5		CuZn	
9-545503	621A	V5.02.1	75	42.5	65	55.0		CuZn	
9-546503	622A	V5.02.2	115	48.0	90	94.5		CuZn	

ACCESSORIES

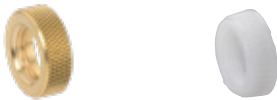
For agricultural valves



9-324703 9-324701 9-324603

Valve core pieces

Art. no.	TR no.	ETRTO no.	Length (mm)	Vehicle type	Material	Surface	Valve caps
9-324703	CH3	V4.02.1	35.5		CuZn	-	
9-324701	CH3	V4.02.1	35.5		CuZn	-	
9-324603	CH1		40.0		CuZn	Ni	



9-322200 9-322215

Rim nuts

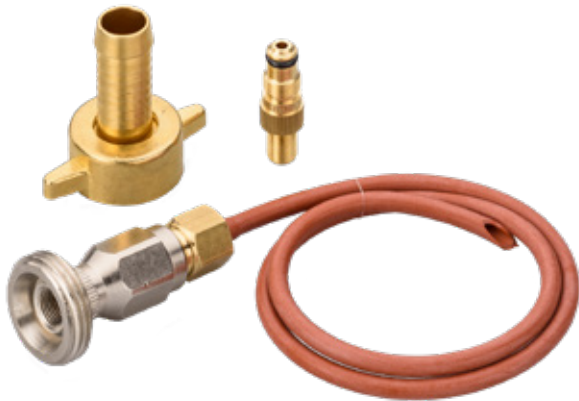
Art. no.	TR no.	ETRTO no.	Thread	Vehicle type	Material	Surface
9-322200	LN10	V9.14.1	12V1		CuZn	-
9-322215	LN10	V9.14.1eq	12V1		Plastic	-

WATER FILLING AND
EMPTYING DEVICES

For easy filling of tractor tires



9-339182 9-339101



9-339181



9-339051
9-339251
9-339002
9-033365

9-339091

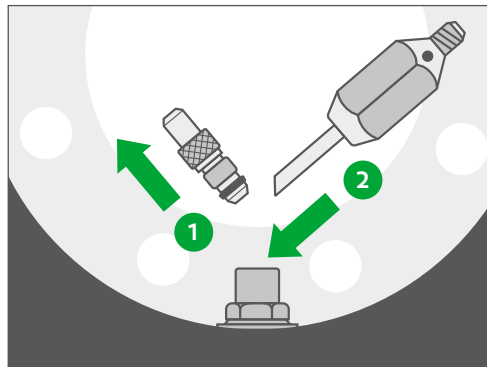
Water filling and emptying devices

Art. no.	Description	Vehicle type	Material	Surface
9-339182	Combined water filling and emptying devices (Hanauer Mouse)		CuZn	Ni
9-339181	Combined water filling and emptying devices (Waterboy G3/4)		CuZn	Ni
9-339101	Air/water fittings		CuZn	Ni
9-339091	Adapter set G3/4 + 12V1		CuZn	Ni
9-033365	Hose coupling 1/3		CuZn	-
9-339002	ZW air/water adapter		CuZn	Ni
9-339051	Adapter		CuZn	Ni
9-339251	Adapter		CuZn	-

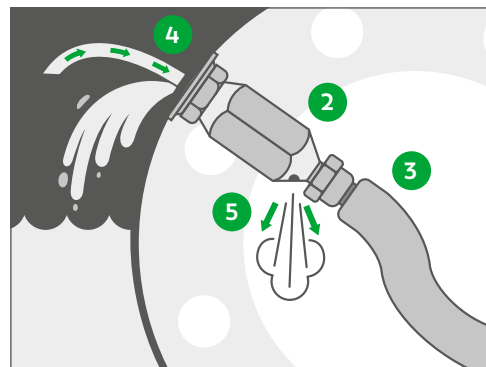
ASSEMBLY INSTRUCTION

WATER FILL- & EMPTYING DEVICE

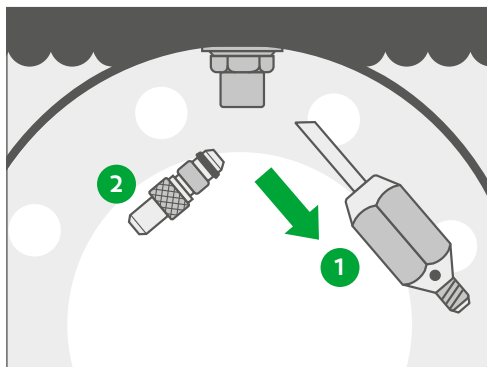
Filling the driving wheels



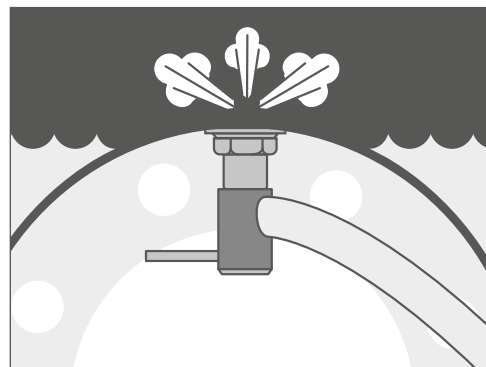
- Jack up the driving wheel.
- Unscrew valve core housing 1 from the rim valve.
- Allow compressed air to escape.
- Unscrew water filling valve 2.



- Set driving wheel to position 2.
- Connect water hose 3 and fill with water.
- Air escapes from the tires through the tube 4 and the opening 5.
- The tire is starting filled with water when the water flows from the opening 5.

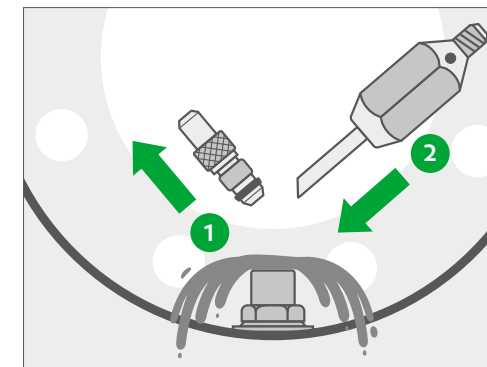


- Set driving wheel to position 3.
- Unscrew water filling valve 2.
- Screw in valve core housing 1.

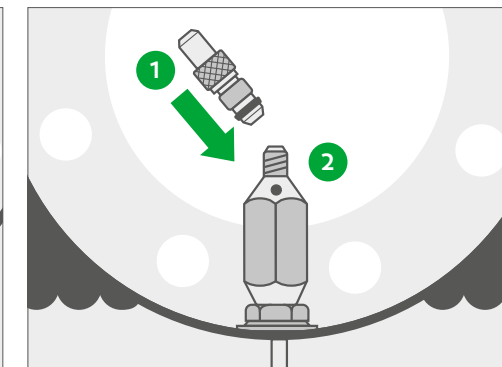


- Fill tires with compressed air according to instructions.
- Store water filling valve in a safe place.

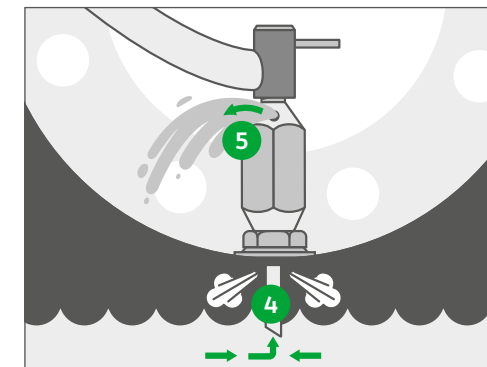
Emptying the driving wheels



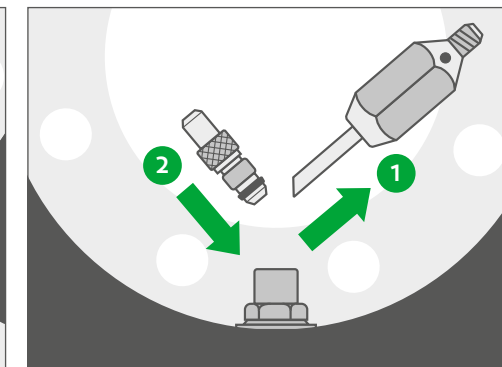
- Jack up the driving wheel.
- Unscrew valve core housing 1 from the rim valve.
- Drain water.
- Unscrew water filling valve 2.



- Screw valve core housing 1 into water filling valve 1.



- Fill with compressed air.
- Air from tires escapes through tube 4 and opening 5.



- Unscrew water filling valve 2.
- Screw in valve core housing 1.
- Fill tires with compressed air according to instructions.
- Store water filling valve in a safe place.

