



Quickstart-Installationshandbuch für das **ALLIGATOR sens.it™** Programmiergerät und die Programmiersoftware.



Quick Start Installation Guide for **ALLIGATOR sens.it™** Programming Tool and Programming App.



Guía de instalación rápida para la **Herramienta de programación y Aplicación de programación ALLIGATOR sens.it™**.



Guide d'installation et de démarrage rapide pour l'**outil de programmation et l'application de programmation ALLIGATOR sens.it™**.



Guida rapida di installazione per lo **Strumento di programmazione e l'applicazione di programmazione di ALLIGATOR sens.it™**.

www.alligator-sensit.com/download

1



5

VIN Make & Model

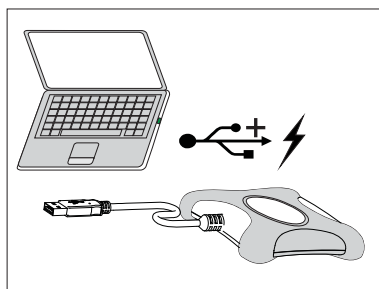
Vehicle Year

Vehicle Make

Vehicle Model

Vehicle Identifier

2



6

Sensor Programming

Vehicle details

Vehicle: 2012 TOYOTA COROLLA

Year: 2012

Make: TOYOTA

Model: COROLLA

Submodel: Base - Exc. Japan Built Veh

Mileage: miles

Fire details

OE Manufacturer: Pacific

OE Part Number: 42607-06011

OE Frequency: 315 MHz

AutoGenerate ID

OE Sensor ID (hex): **5576FAA**

Reason?: Battery Empty

Click to program sensor ->

Sensor Details

Type: RS2 - Dip Pin

Frequency: 315 MHz

Sensor ID: 5576FAA

Date: 9/6/2012

Mileage:

3

Welcome to ALLIGATOR sens.it

Login Contact

Username

Password

Remember Me

[Register Now](#)

[Forgot Password](#)

Language

7

AutoGenerate ID

(dec)

Click to program sensor ->

4



8

Bitte beachten Sie das in der Box beiliegende Installationshandbuch für weitere Informationen oder besuchen Sie uns auf:
 Please check the installation manual inside the box for further information or visit us on:
 Compruebe el manual de instalación del interior de la caja para más información o visítenos en:
 Veuillez consulter le manuel d'installation dans le carton pour de plus amples renseignements ou visitez notre site:
 Consultare il manuale d'installazione all'interno della scatola per ulteriori informazioni, oppure visitare il nostro sito all'indirizzo: