

sens.it™

sensor intelligent technology



Installation Manual Programming Tool

Declaration of conformity for devices with the FCC logo – USA only

This device complies with Part 15 of the FCC Rules. Operation is subject to the following two conditions:

- (1) this device may not cause harmful interference, and
- (2) this device must accept any interference received, including interference that may cause undesired operation.



If you have any questions about this FCC declaration, please contact us in writing, www.alligator-sensit.com | info@alligator-sensit.com

Note for Canada:

7.1.3 User manual Notice for Licence-Exempt Radio Apparatus

This device complies with Industry Canada licence-exempt RSS standard(s).

Operation is subject to the following two conditions:

- (1) this device may not cause interference, and
- (2) this device must accept any interference, including interference that may cause undesired operation of the device.

7.1.3 Avis de conformité insérés dans le manuel d'utilisation des appareils radio exempts de licence

Le présent appareil est conforme aux CNR d'Industrie Canada applicables aux appareils radio exempts de licence. L'exploitation est autorisée aux deux conditions suivantes :

- (1) l'appareil ne doit pas produire de brouillage, et
- (2) l'utilisateur de l'appareil doit accepter tout brouillage radioélectrique subi, même si le brouillage est susceptible d'en compromettre le fonctionnement.

Trademark stipulations:

Windows XP, Vista and Windows7 are registered trademarks of the Microsoft Corporation in the Unites States and/or other countries. Furthermore, all other brands or companies named are also trademarks or registered trademarks of the corresponding companies.

Introduction:

Thank you for deciding to buy ALLIGATOR sens.it. The following pages will familiarize you with the Programming Tool and the Programming App.

Read the following instructions before you begin using the Programming Tool and the Programming App.

First, make sure that the package contents are complete. This must contain:

- The Programming Tool with USB cable
- Abbreviated instructions for installation

System prerequisites for the installation and use of the Programming Tool:

Hardware:

- Standard USB input. We recommend a USB connection with power supply in order to guarantee a constant supply of power.
- Intel Pentium processor or equivalent, with 1.6 GHz or higher memory capacity
- Resolution: min. 1024 x 768 pixels and 16 bits, recommended 1280x1024 pixels and 32 bits
- Minimum 15 MB free memory

Software:

- Microsoft Windows XP, Vista or Windows7
- Internet Explorer 6.0 or higher

Guarante:

ALLIGATOR Ventilfabrik GmbH guarantees that the Programming Tool is free from material and manufacturing defects for a period of 12 months.

In case of warranty, ALLIGATOR Ventilfabrik GmbH will replace the defective part free of charge. ALLIGATOR Ventilfabrik GmbH does not replace any parts which have been damaged as a result of wrong installation, misuse or due to an accident. Damages caused by third parties are excluded from this guarantee.

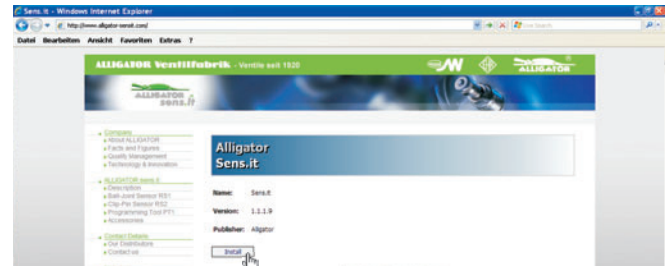
In case of warranty, you must return the defective sensor together with the completed warranty form to your supplier. For this purpose, please use the form on our website:

<http://www.alligator-sensit.com>

1. Software Installation:

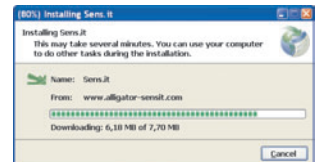
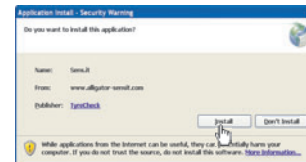
Please follow the instructions below in order to install the software correctly.

Step 1: Download the software under: <http://www.alligator-sensit.com/download>



Step2:

The installation procedure begins in a window of its own. Then click on "Install".

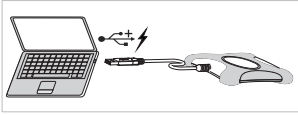


You have now successfully installed the software on your computer.

If the login screen does not open automatically, start the program in the start menu under: Start - Program - ALLIGATOR - sens.it

2. Hardware Preparation:

Connect the USB plug of the Programming Tool to the USB connection of your computer. Your computer then displays a message indicating that it has identified new hardware. The drivers for the Programming Tool were already installed with the software.



WARNING! Do not use a USB extension cable. This could impede the functional capability of the Programming Tool and cause a loss of data.

WARNING! When using a USB hub, make sure that the Programming Tool functions error-free and that no disturbances in data transfer occur. To prevent possible disturbances, do not install a USB hub interconnection and connect the Programming Tool directly to your computer.

Operating status indication:

The Programming Tool indicates the operating status via the LED:

- green = The Programming Tool is ready for programming
- red = An error has occurred
- green-red-flashing = The programming process is in progress

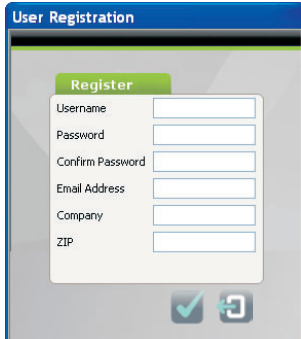
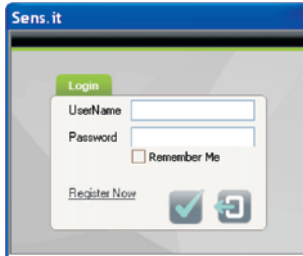


3. Programming App Login:

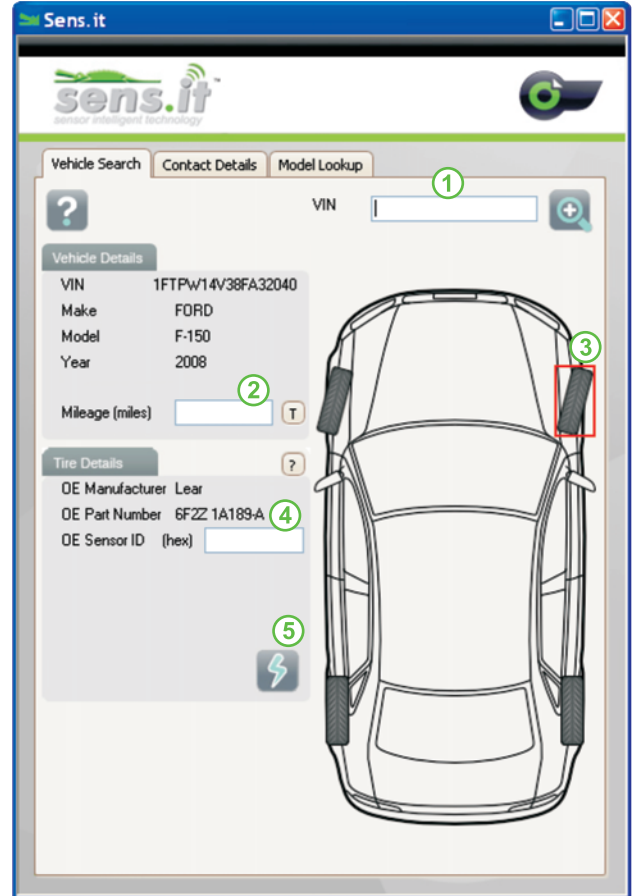
Start the program in the start menu under Start - Program - ALLIGATOR - sens.it.

If you have already received the login details by mail or by e-mail, you can enter these directly and log in.

If you have not received the login details in advance, click on "Register Now" in the login window. Fill out the form and choose your user name and password. Following successful registration, you can log into the Programming App.



4. Programming the Sensors:



- 1 Enter the chassis number (vehicle identification number, VIN = 17-digits) of the vehicle and control the data displayed (manufacturer, model, year of manufacture)
- 2 Enter the mileage.
By clicking on "T", you can change between miles and kilometers.
- 3 Click on the corresponding wheel to select the wheel position for the new sensor.
- 4 Enter the original sensor identification number. By clicking on the question mark, you can localize the original sensor number of the old sensor.
- 5 Click on the "Flash Button" to start the programming process.

Lay the sensor as shown onto the Programming Tool. Make sure that no other sensors are lying within a radius of 12 inches (30 cm).



WARNING! While the programming process is running, do not remove the sensor from the Programming Tool or touch it. This could interrupt the programming process or cause faulty data transfer to the software. The successful programming of the sensor is displayed on the screen. You can now start a new programming process, either for the same vehicle ③ or for a new vehicle ①.

Attention! Install the sensor and the valve in accordance with the installation instructions in order to prevent damage to the parts during the installation of the tire.